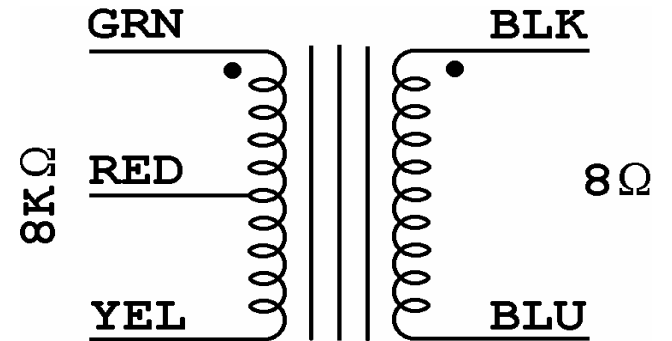
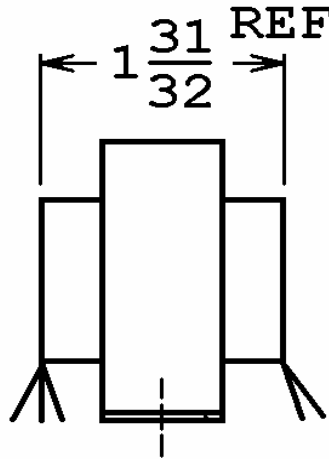
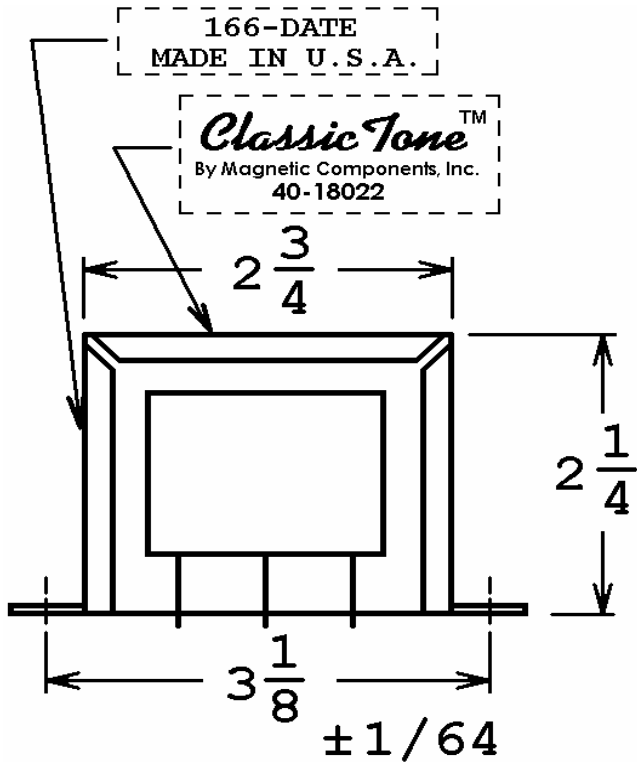


40-18022

This drawing is the property of Magnetic Components, Inc. and shall not be reproduced, in whole or in part, without the written permission of Magnetic Components, Inc.

REVISIONS			
LTR	DESCRIPTION	DATE	APPROVED
A	ADD PRIMARY IMPEDANCE	09/02/09	M. Sacketti
B	ADD ClassicTone, FENDER P/N	01/08/10	M. Sacketti
C	ADD FRAME GROUNDING NOTE	04/05/11	M. Sacketti
D	ADD BLU TO GROUNDED LEAD	10/09/13	M. Sacketti
E	ADD SECONDARY IMPEDANCE	09/26/14	M. Sacketti
F	BLU LEAD WAS GROUNDED TO CHANNEL FRAME	09/18/15	M. Sacketti



FENDER P/N :
50246

UNLESS OTHERWISE SPECIFIED		SIGNATURES		DATE	MAGNETIC COMPONENTS, INC.		DIV :		
ALL DIMENSIONS IN INCHES DO NOT SCALE DRAWING		DRAWN : <i>M. Sacketti</i>		04 JUN 09	TITLE 5E3 OUTPUT		LOC : SCHILLER PK		
		CHECK :							
FRACTIONS +/-		APPR : <i>M. Sacketti</i>		04 JUN 09	CAGE	50508	SIZE	PART No.	REV
.X = +/-							A	40-18022	F
.XX = +/-					SCALE	NONE			
.XXX = +/-					SHEET :				
ANGLES = +/-									