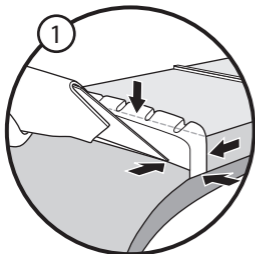
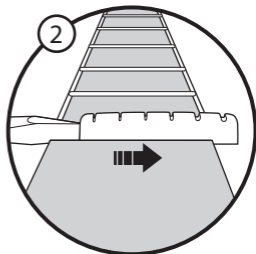


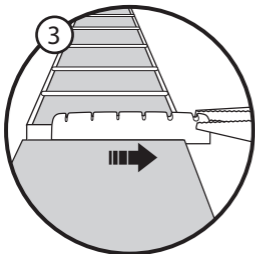
NUT INSTALLATION INSTRUCTIONS



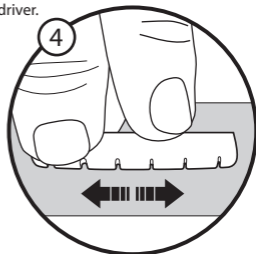
Remove the strings. Score around every edge of the nut with an exacto knife to prevent lacquer sticking to the nut and the neck and chipping away.



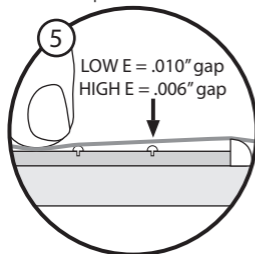
If the nut is not sitting in a slot, usually a light tap with a small block will set it free. If it is sitting in a slot, gently tap it out sideways using a hammer and a screw driver.



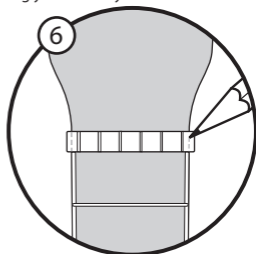
When it is sticking out the side, pull it out in the same direction with a pair of pliers, like you would a tooth. Scrape or file the nut slot free from old glue and finish residue while making sure that the slot remains square.



See if the Graph Tech nut fits into the slot, without forcing it. If it's too thick, place a 240 to 600 grit sand paper face up on a flat surface and sand down the sides of the nut until it fits in the slot snugly but is easily removable.



Place the nut in the nut slot and restring the guitar; tune to pitch. To check for correct height, press down on the string just past the 2nd fret and measure the gap between the string and the 1st fret. This gap should be 0.010" (0.25mm) for the low E string and 0.006" (0.15mm) for the high E string. Loosen the strings and remove the nut; sand the bottom of the nut to reduce the height.



Once you've adjusted the thickness and the height, you just need to sand the ends of the nut so that they are flush with the neck. Just use a pencil and mark the ends of the nut that are sticking out, remove it from the neck and sand it to your marks.

NEED HELP?

Contact **GRAPH TECH GUITAR LABS** via
www.graphtech.com