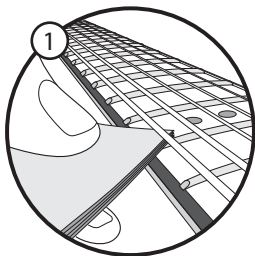
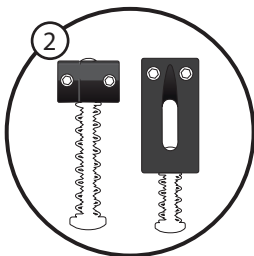


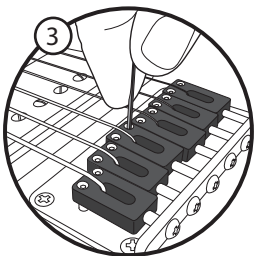
ELECTRIC SADDLE INSTALLATION INSTRUCTIONS



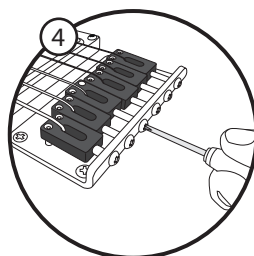
Determine correct string height, by measuring the gap between the top of the twelfth fret and the bottom of the low E string. It should be around 0.125" (3mm), or about a stack of 12 business cards if you don't have a ruler. For the high E string, the gap should be around 0.080" (2mm), or about a stack of 8 business cards.



Remove the old saddles and replace them with your new Graph Tech saddles. Set the intonation "starting point" by turning the intonation screw in so that you can just see it coming out the other side of the saddle. Tune your guitar to concert pitch.



Adjust string height using the supplied allen key to lower or raise your saddles until correct string height is achieved. Be sure to adjust both height adjustment screws equally to keep the saddle level. Tune guitar to concert pitch after each adjustment. Repeat for each string.



Set the intonation. In order for chords to play in tune all over the fretboard, each string must be correctly intonated. The note fretted at the 12th fret should match the 12th-fret harmonic. Compare the pitch of the fretted note and the harmonic (lightly touch the string right above the 12th fret and pluck). Adjust each saddle by turning its intonation screw with a screwdriver. Shortening the string will increase the pitch of the harmonic relative to the fretted note; making the string longer will decrease the pitch. Each time you make a saddle adjustment, retune the string before comparing pitches again.

NEED HELP? Contact **GRAPH TECH GUITAR LABS** at 604-940-5353, via e-mail at sales@graphtech.com, or consult our website at www.graphtech.com