

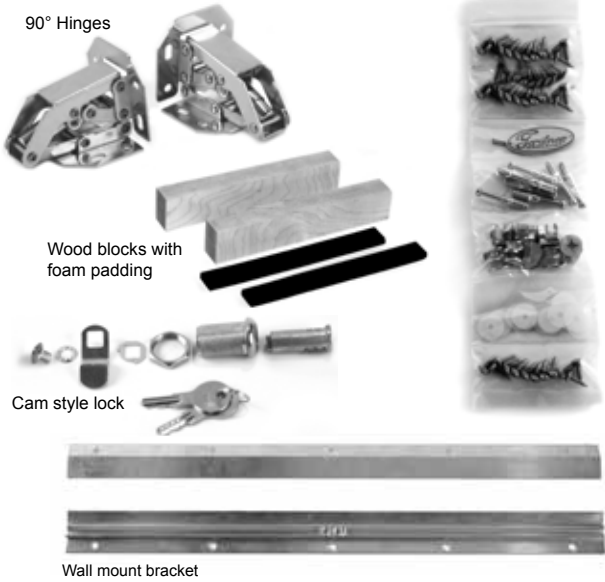
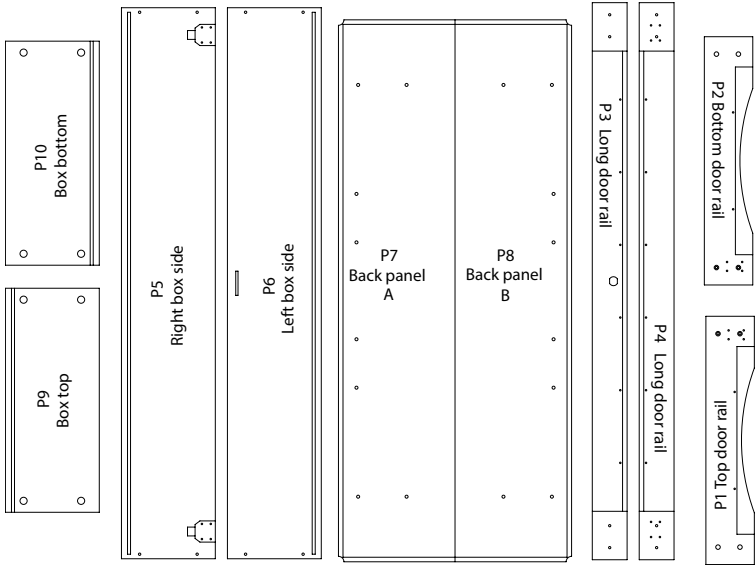


Build-Your-Own MAPLE DISPLAY CASE



Wood and Hardware

- (1) **(P1)** Top door rail
- (1) **(P2)** Bottom door rail
- (1) **(P3)** Right long door rails
- (1) **(P4)** Left long door rails
- (1) **(P5)** Right box side
- (1) **(P6)** Left box side
- (1) **(P7)** Right back panel
- (1) **(P8)** Left back panel
- (1) **(P9)** Box top
- (1) **(P10)** Box bottom
- (32) **(F4)** 3/8" Truss head screws
- (12) **(F3)** 1/2" Truss head screws
- (16) **(F5)** 5/8" OD nylon washers
- (8) **(F1)** RTA Cams
- (8) **(F2)** RTA Dowels
- (1) Nameplate with brads
- (2) Hinges - 90 degree type
- (1) Lock - cam style
- (2) Wood blocks with foam padding
- (1) Wall mount bracket assembly



Recommended tools

- #2 Philips screw driver
- 100 and 150 grit sandpaper
- 90 degree square
- Rubber Mallet/Hammer
- Electric drill
- Your Choice of Stain/Finish

Please Note: If you are not going to start building the chest right away, you will need to weight down the parts. The parts are unfinished and can warp if left in the box for extended periods of time. Gerstner is not responsible for replacing warped parts 30 days after receipt.

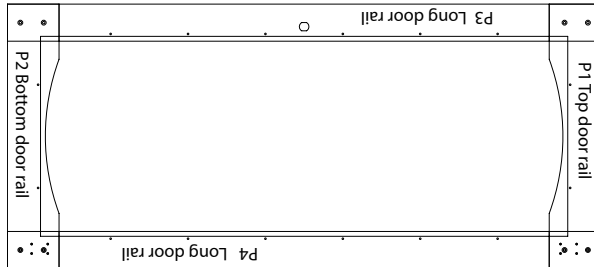
Gerstner® Workshop Build-Your-Own Maple Display Case Instructions

Parts prep before starting the job

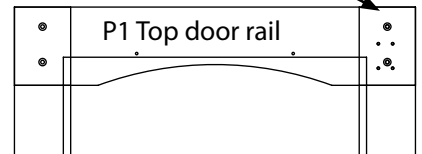
Lightly sand the part edges so that they are free from burs and splinters. It is recommended that you pre-assemble the box to familiarize yourself with the process. Make sure you are working on a sturdy flat work surface that will not scratch or dent your parts while handling them.

Door Assembly Parts P1, P2, P3, P4

- Use (F3) Screws to assemble the door.



NOTE: Hinge holes



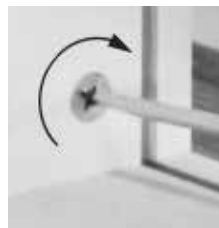
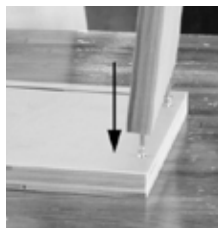
- 1/8" Glass or Plexiglas (*not included*) will be installed with the (F4) Screws and (F5) Washers.



NOTE: Glass or Plexiglas
dimension: 15-7/8" x 40-13/16"

Case Assembly Parts P5, P6, P9, P10

- Install the (P9) top and (P10) bottom on the (P6) Left Side. Make sure there are no wood chips or saw dust in the cam holes before installing the (F1) cams. The arrow on the cams point toward the dowel hole on the edge of the parts.
- Rotate the cams clockwise to lock the Dowels into the cams.

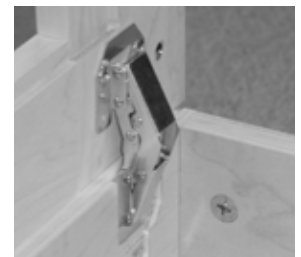


NOTE:
Back grooves
must line up

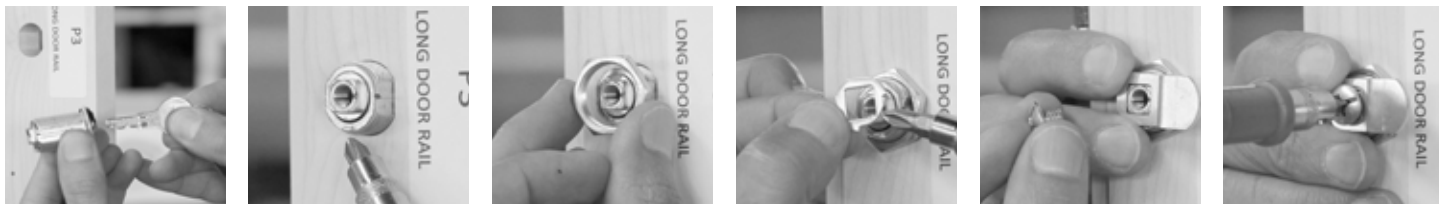
- Assemble the (P7) and (P8) back. Slide the back into the back groove. Make sure the holes for the hanging bracket are toward the outside of the case (the side with the sticker is toward the outside of the case).
- Install the (P5) Right Side on the case.

Hardware Installation

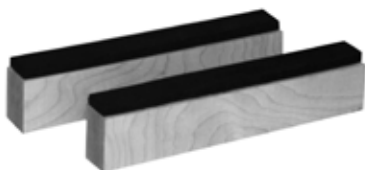
- Use the (F4) screws to install the hinges. Mount the hinges into the pre-drilled holes in the case and then the door.



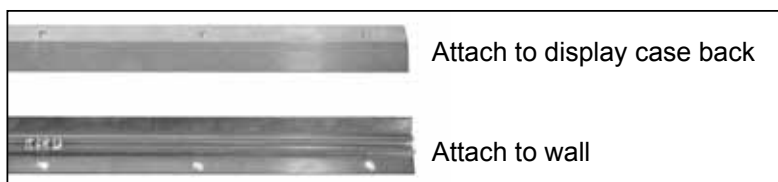
- Install the Cam Lock on the door. Insert the cam lock through the door.
- Tighten the nut to hold the lock in place.
- Re-assemble the lock parts on the lock.



- Install the wood blocks in the bottom of the case.



- Install the curved wall mounting bracket on the back of the case with the (F3) screws.



- Sand, stain or paint the case as desired.

Recommended Steps to Sand and Finish your Gerstner® Workshop *Build-Your-Own* Maple Display Case Instructions

1. Final sand all parts of your case to desired grit. (Gerstner recommends 150 grit sand paper).
2. Stain and finish the parts as desired. Gerstner stains and then applies 1-2 coats of a lacquer sealer and then 1-2 top coats of lacquer. (Make sure to use a style finish that you are comfortable working with.)
3. Congratulations, you are finished, now sit back and enjoy a lifetime of use of your new display case.

***CAUTION:** We use veneer plywood on the case. This plywood gives the box stability through ever-changing conditions of humidity. Please note that you must exercise great care when sanding. The veneer is .010" thick and excessive sanding on these areas can cause a sand-through, to the plywood core below the veneer.

NOTE: Select *How-To* reference video clips are available on www.GerstnerUSA.com/videos.htm

Have a question? Call us at 937-228-1662.
Ask for Scott or Bert.