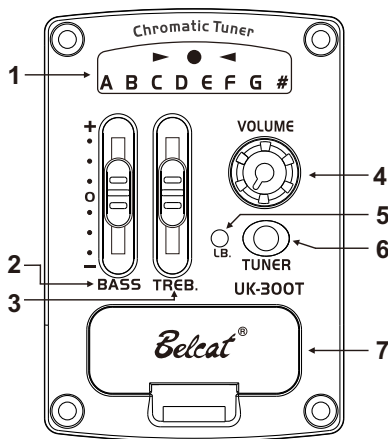


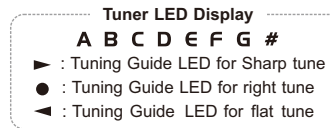
## 2Band EQ with Chromatic LED tuner



1. Tuner LED Display
2. Bass
3. Treble
4. Volume Knob
5. Low Batt. (Low Battery LED Light)
6. Tuner on/off Button
7. Battery box

— 1 —

### 1. Tuner LED Display



### 2. Bass (for bass tones)

### 3. Treble (for high tones)

The BASS, TREBLE controls are a 3-band equalizer for controlling tone.

The center detent on these tone controls yields a flat tone response. "+12" boosts the tone; "12" cuts the tone.

### 4. Volume Knob

The VOLUME controls the output volume. At "0" it is completely OFF. At "10" it is loud.

### 5. Low Batt. (Low Battery LED Light)

The LED will light when the battery has lost power. Replace the battery when this light is on.

This LED light will flash when a cable is connected to the output jack of the pickup system. This shows the battery is good.

### 6. Tuner on/off Button

Power switch of built-in Chromatic LED tuner. Automatic power off after 5 minutes

### 7. Battery box

2 X CR2032 Coin Battery

— 2 —

## Specification

**Features** : 2Band EQ with Chromatic LED tuner

**Input Impedance** : 22 MΩ

**Frequency Response** : 20Hz ~ 20KHz

**Control Range**

**Bass** : +/-12dB at 100Hz

**Treble** : +/-12dB at 10KHz

**Battery Status LED**

**Power Supply** : 2 X CR2032 Coin Battery

**Battery Life**

**Only Eq** : Over 200Hours

**Tuner on** : Over 100Hours

**Pick-up** : Omega II Piezo Cable pick-up

**Dimension** : W 56mm X H 40mm (2.2" X 1.6")

— 3 —

## Caution

- The jack should be plugged for proper Preamp working. (TUNER will works regardless plugging jack)
  - There is no output sound, please check if tuner or mute is turned on.
  - When LCD screen is dim or no display, please check battery life.
  - To prevent battery loss, please unplug jack when preamp is not in use.
  - Do not disassemble for repair.
- Return to your dealer for service or repair.
- Do not use too much force when operating the control.

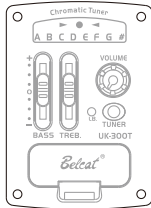
**Belcat**<sup>®</sup>  
 BELCAT Co., Ltd.  
 Tel: +86 752 355 7545  
 Fax: +86 752 355 2460  
 Email: belcat@belcat.com  
 Internet: www.belcat.com



— 4 —

# INSTALLATION MANUAL

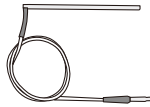
## 1. Contents



1. Preamp



2. Output Jack



3. Pick-Up



4. Clip



5. Screw

## 2. Tool



1. Electric Drill



2. Drill Bit  
(2.3mm or 3mm and 12mm)



3. Phillips Screwdriver



4. Router and Grinder  
(cutting-edge 3mm)

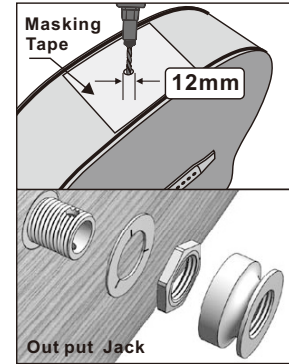
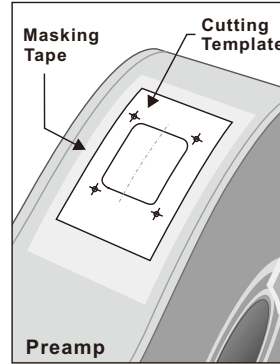


5. Round File

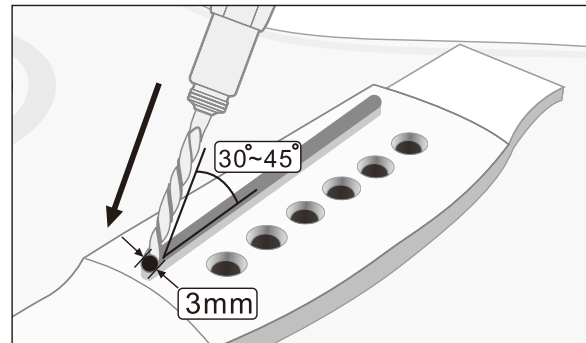


6. Masking Tape

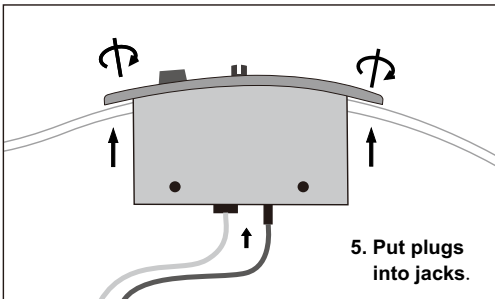
## 1. Cut out the hole with template



## 2. Drilling hole for pick-up

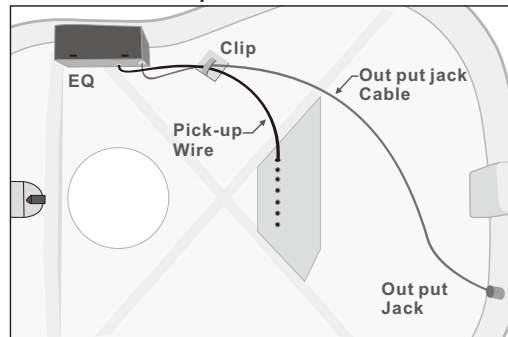


3. Insert EQ and battery box into hole of guitar.
4. Fasten screws properly.

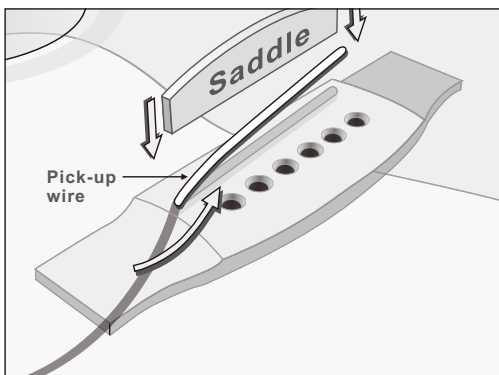


5. Put plugs into jacks.

## 7. Fix wire with clip.



## 6. Installing the pick-up



## Solution

- 1) When there is no sound or sound is stopped,
  - Check guitar cable, amp or Mixer
  - Check if there is batter or not. When it happens noise or distortion, please exchange battery.
  - Check if the pickup and battery connector is connected correctly or not.
  - Check if out put jack is connected correctly.
- 2) When there is hum-noise,
  - Check the pickup is connected well or not.
  - Check if the connectors are connected to correct position well or not.
- 3) Some causes of the balance problem
  - When the bottom of saddle or the groove of saddle is not flat.
  - When saddle is installed to the groove of saddle loosely.
  - When the connection is not good between the bottom of saddle and the groove of saddle.
  - When Saddle is very short
  - When there is grounds on the groove of saddle.
  - When Saddle is declined toward front or back.
  - When the top of guitar is bended.
  - When the pickup is installed to only a part of the groove of saddle.

(back page)

# Cutting Template

Print>Page Handling>Page Scaling

- None
- Fit to print margins
- Reduce to print margins

1. Print this file without scaling option.
2. Check the size with actual ruler.
3. Cut out the dotted line or desire model.
4. Adhere to location use double stick tape.
5. Cut follow solid line use cutter.

